

Long Island Speech-Language-Hearing Association



HEAR-SAY

Published Quarterly—April 2011

Volume 35, Issue 2

Newsletter Highlights

Page

2. Private Practice
3. New State IEP
4. LEARN and SHOP
5. MBHSM
6. Aural Rehabilitation
7. Childhood Apraxia
8. State Budget Update
10. LISHA Donates
11. Audiology Corner
12. Members on the Move
13. 21st Annual Awards
14. Speech Interns
15. Honors and Awards
17. Doctoral Scholarship
19. Fall Conference
20. Upcoming Events
 - Find the LISHA

Past President wearing a wacky tie (look for details in this issue)

LISHA

PO Box 133

Mastic Beach, NY 11951

Office - 516-626-8000

or 631-395-2770

Fax - 631-657-3480

info@lisha.org

President's Message

"DIGGING OUT TO
PREPARE FOR THE
SPRING FLING AND
SUMMER FUN!"

This year's first workshop for 2011 was held on January 18th and was a sell out, as Dr. Jack Kamins spoke on the New IEP issues for speech-language pathologists working in the schools. In early February, we had a large crowd attend a private

practice workshop. Our councilors are working diligently on planning future workshops for you—in April, there will be a workshop on Collaborative Problem Solving. You are also cordially invited to attend our open Board Meeting on April 11 to see what LISHA is all about. May is *Better Hearing and Speech Month*, and it is always exciting as children across Nassau and Suffolk counties create posters for the poster contest. Graduate Students at our local universities are honored at this special LISHA event. The Public Information Committee will be hosting this event on Wednesday, May 25th, watch for the invitation in your next mailing.

I would be remiss not to mention the first online issue of HEARSAY, we are very proud of its production. This is another way for LISHA to strive to "go green." I hope that all members were able to access the newsletter easily—if not—please call the hotline and we will assist you. Keep your eyes out for the next issue.

Our councilors are working furiously to bring you additional workshops to be held in the summer. In June, the audiology membership will be provided with the courses they need to fulfill their hearing aid dispensing license requirements. Other councilors are working on topics that you have requested in our surveys. Stay tuned!

In October 2011, our annual Fall Conference will offer a slate of wonderful speakers. The fall conference committee, under the direction of our Vice President, Dr. Renee Fabus, has already begun planning for the Annual Conference. This is a good opportunity to consider volunteering at this event. Remember, no amount of time is too small. If I can be of any assistance to any member, or if you want to know more about participating in LISHA, please do not hesitate to contact me via E-Mail.

Yours in service,

Susan Antonellis, Au.D., CCC-A

2010 - 2011 LISHA President

HEAR-SAY

Phone - (631)-395-2770
Hotline - (516)-626-8000
info@lisha.org

Editor-in-Chief

Joan Franzese Rooney

Design & Layout

Pat Luft

Editorial Committee

Dr. Susan Antonellis

Dr. Renee Fabus

Dr. Florence L. Myers

Renee Trachtenberg

Dr. Sandra White

Staff Writers

Dr. Marie Ann Zumpone-Weibley

Kim Scharoff

Michelle Merlino

Melissa Kreuder

Joan Franzese Rooney

Kathy Febraio

Dr. Renee Fabus

Kristin Baldwin

Dr. Susan Antonellis

“HOW TO START A PRIVATE PRACTICE”

By: Steven M. Asofsky, MA, LSP CCC/TSHH,
Private Practice Councilor

Francine S. Pickus



On February 8, 2011, Francine S. Pickus, MS, CCC-SLP TSHH presented a workshop on “How To Start A Private Practice”, which was received extremely well with an attendance of approximately seventy participants. Francine was enthusiastic and captivating when presenting a subject matter that can only be so much fun to hear. The information included credentialing requirements of the speech-language pathologist in private practice, the type of entity to be formed, location, supplies/materials, and insurance issues. She also discussed the populations (disabilities) that could be treated, and the varying age ranges. Francine delineated how to market the practice, the varying opportunities of providing services (contract, insurance provider, private pay, etc.), and how to schedule and subsequently bill for the services rendered. In summation, Francine S. Pickus presented quite a comprehensive and beneficial workshop in which the participants were able to leave with a sense of direction. In fact, there have been numerous inquiries to the private practice councilor (Steven M. Asofsky) with regard to this said workshop on “How To Start A Private Practice”. Given the success of this workshop, it would most likely be “one” to be presented again in the future.

**Look for the LISHA Past President
wearing a wacky tie in
this issue,**



**E-Mail the code
on top of the picture
to info@LISHA.org.
The first five E-Mails
will receive a LISHA
hardcover diary!**

**You must be a current member
to win!**

The New State Mandated IEP

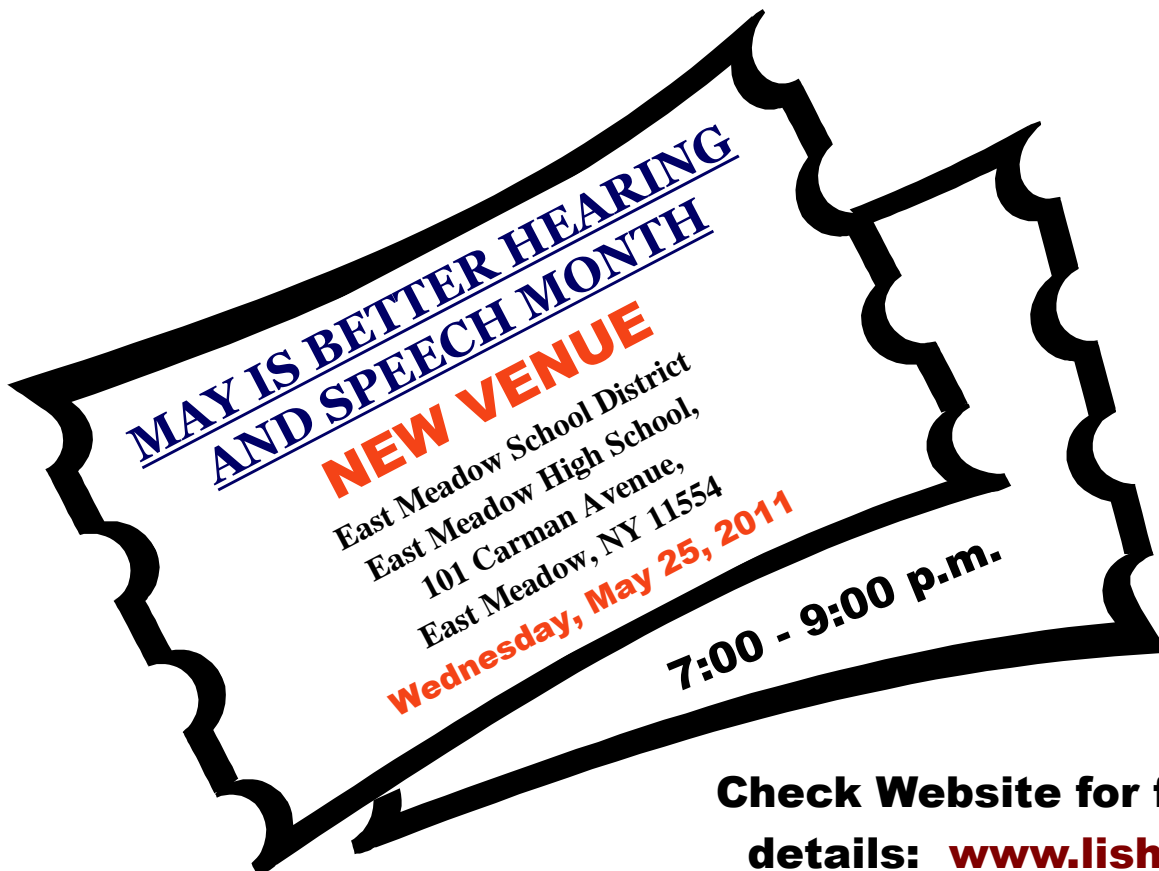
By: **Kim Scharoff, M.A., CCC-SLP, Schools Councilor and Past President**

On Tuesday, January 18, 2011, over 100 members attended a workshop by Dr. Jack Kamins of Centris Group on the New State Mandated IEP. For three hours, members listened closely and asked specific questions regarding the changes to the IEP format that go into effect for the 2011-2012 school year.

Dr. Kamins explained that a few years ago, the state determined that every IEP in the state should follow the same format. The order of the document follows how things should be discussed at a Committee on Special Education (CSE) meeting. It begins with a discussion of the student's current levels/needs, proposed goals and concludes with the programs and services the student needs to meet those goals.

The IEP document will go from a portrait to landscape orientation. It must now contain information on a student's current abilities, strengths, and needs, including the consideration of the parent's input. Dr. Kamins discussed how goals should be annual in nature, and that we need to be careful not to use the same goal year after year, even if we are changing the percentage because if taken to an impartial hearing, it could work against us.

Dr. Kamins presented an informative workshop on a topic of interest to those of us who work in the school settings. It will be beneficial as we begin the annual review process. If anyone has questions about the new state mandated IEP form, please do not hesitate to contact me at info@lisha.org.



Check Website for further details: www.lisha.org

SPECIAL EVENT

LISHA's LEARN AND SHOP!



You asked for it and here it is:
A Workshop in **EASTERN SUFFOLK COUNTY**

June 4, 2011

Medical Terminology Pediatric and Adults
More Details on Learning Objectives Coming SOON!

Presenter: Kathleen McCloskey, M.A., CCC-SLP

Location: Club Indigo Riverhead, NY

Time: 8:30 am Registration—12:00pm - .3 CEUs offered (ASHA)

12:00 - **Shop 'til you DROP!**

at the Tanger Outlet in Riverhead

located right next to the Workshop Venue!!

Free coupon book will be given to all participants!

tangerstyle



May is Better Hearing and Speech Month

By: Melissa Kreuder, Public Information Councilor



May is “Better Hearing and Speech Month” and it is coming soon. The LISHA Public Information Committee has been diligently working on preparations for our annual event. The committee members are currently completing the “final touches” for the Awards Night Ceremony, which LISHA runs during the month of May.

This year, the LISHA Public Information committee is comprised of several dedicated LISHA members including Melissa Kreuder, Denise McKeon, and Terri Lucks.

“Better Hearing and Speech Month” is a national event. It has been a tradition for LISHA to partake in the celebration. A great deal of planning occurs prior to the month of May to successfully attain our goal of increasing public awareness of speech-language pathology and audiology. LISHA will be publicizing “Better Hearing and Speech Month” through newspapers, television stations, and radio stations. Public service announcements and press releases will be provided to the media.

The LISHA organization has been conducting its annual poster contest for “Better Hearing and Speech Month.” All school-aged children in public or private schools, clinical settings, and special education programs have been involved in creating educational posters. Posters are to be submitted by April 8, 2011.

All posters will be judged at the April board meeting on April 11, 2011. We would like to encourage all LISHA members to attend the meeting and cast their votes. Last year, over one hundred posters were submitted. Students who participate will receive a Certificate of Achievement for their involvement.

The 21st Annual Awards Night Ceremony will be held on May 25, 2011 at the East Meadow High School, located at 101 Carman Avenue, East Meadow, NY. This event is free and open to award winners, family members, teachers, LISHA members, and the community.

In addition to the Poster Contest, Parent/Caregiver and Joan Fox Awards will be presented during the Ceremony. The Parent/Caregiver Awards give LISHA an opportunity to recognize individuals who have shown outstanding participation and support in furthering the communication skills of a speech-language or hearing impaired individual.

In order to nominate the individuals for the Parent/Caregiver Awards, it is required that a short essay describing the nominees be submitted. The Joan Fox Awards will be presented to distinguished graduate students from local universities.

LISHA is enthusiastic about initiating the events related to “Better Hearing and Speech Month” as well as the 21st Annual Awards Night Ceremony. For further information please log onto the LISHA web site at www.lisha.org.

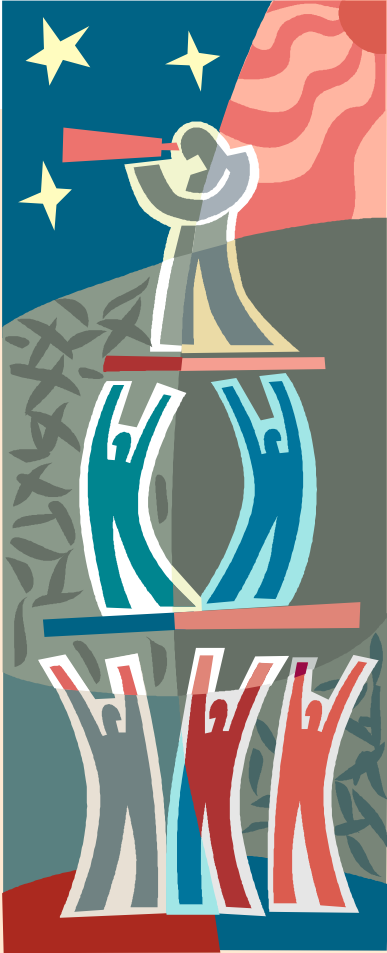
If you have any questions regarding “Better Hearing and Speech Month” or if you have any interest in participating on the Public Information Committee please feel free to contact Melissa Kreuder or Denise McKeon at (516) 626-8000.

As always, the LISHA organization welcomes participation from all of its members!

Aural Rehabilitation --A Team Approach

By: Michelle Merlino and Kristin Baldwin

Student Committee



Aural rehabilitation encompasses a variety of educational strategies for the hearing impaired to improve their overall communication skills. It is often a joint endeavor by both the Audiologist and Speech-Language Pathologist. Both the Audiologist and Speech-Language Pathologist play an important role in designing an effective treatment plan. Teaching the best use of hearing aids, introducing sound through cochlear implants, maximizing residual hearing, and strengthening other sensory modalities are but a few of the many goals in aural rehabilitation. Audiologists and Speech-Language Pathologists work together to help optimize the hearing impaired individual's speech, language, and communication skills.

The Speech-Language Pathologist assesses the patient's communication strengths and weaknesses. The goals are designed to be functional and based on the client's needs. Whether the client is working in a group or individually some of the activities may include ordering in a restaurant, asking for directions, and other self-advocacy activities. Many of these activities are a great way to interpret and use body language, speech reading, and facial expressions to assist a client acquire an effective and independent means of communication.

An important part of aural rehabilitation is helping the client become more comfortable with using and caring for their hearing aids and other devices. The Audiologist teaches a client how to use and care for their hearing aids, cochlear implants, and other assistive listening devices. At the beginning of each session the devices must be assessed to insure that they are correctly calibrated and in good working condition.

Another essential aspect that concerns both the Audiologist and the Speech-Language Pathologist is the psychosocial effects of hearing loss. Counseling clients and their families about hearing loss is critical to optimizing the success of any treatment plan. Both the Audiologist and the SLP may want to include family members into the sessions. In this way they can help to educate the family members about the dynamics of hearing loss. They can also provide a variety of strategies to help family members accommodate to the many challenges that hearing loss presents in many activities of daily life to both them and the client.

Planning an effective aural rehabilitation treatment plan takes teamwork between the Audiologist and SLP. Together they can significantly improve the satisfaction and quality of life of those individuals and their families who are coping with hearing loss.

For further information:

<http://www.audiology.org/news/Pages/20100111.aspx>

<http://www.audiology.org/news/interviews/Pages/20091007a.aspx>

<http://www.asha.org/public/hearing/Adult-Aural-Rehabilitation>

http://www.asha.org/public/hearing/treatment/child_aur_rehab.htm

<http://www.hearinglossweb.com/Issues/Services/ar/ar.htm>

CHILDHOOD APRAXIA OF SPEECH

Donna Lederman, M.A., CCC-SLP



**By: Joan Franzese Rooney, M.A., CCC-SLP, CED,
Editor in Chief HEAR-SAY**

On Saturday, January 29, 2011, The Information Connection and The Long Island Speech and Hearing Association co-sponsored a full day conference “Childhood Apraxia of Speech” presented by Donna Lederman, M.A., CCC-SLP. Ms. Lederman, a vibrant and interactive speaker with more than thirty five years of experience, is also certified as a Prompt Clinician and Instructor. She owns a Long Island private practice specializing in the assessment and treatment of motor speech disorders.

Since there have been many definitions of Childhood Apraxia of Speech (CAS), Ms. Lederman used the ASHA Technical Report, 2007 (Ad Hoc Committee on Childhood Apraxia of Speech, www.asha.org) as a frame of reference. The presenter divided her lecture into five segments: What is CAS?, Motor or Linguistic Disorder?, Assessment of CAS, Key Components of Effective Treatment, and Developing Successful Intervention. She proceeded to provide extensive information in all areas, and supported this with videotapes of evaluations and treatment of young children.

During the afternoon session, Ms. Lederman presented case studies for the participants to assess and develop treatment plans. Through the use of her own assessment and treatment schematics, she guided the participants in this exercise. Throughout the day, Ms. Lederman provided detailed clinical information on the assessment and treatment of Childhood Apraxia of Speech that can truly be used in both school and clinical settings.



NYSSLHA's 51st Annual Convention May 5 –7, 2011—Saratoga Springs, NY

We have a very strong program this year. Our featured speakers include: Nancy Creaghead, Joan Arvedson, Joseph Stemple, Kevin Kearns, David Smriga, David Hammer, Mark Haehn and Mary Louis Edwards. We've organized the program into the following tracks: Audiology, SLP: Medical Aspects, SLP: Schools, SLP: Early Intervention & Preschool, Professional Issues and Students. Attendees will have the opportunity to earn up to 1.8 ASHA or AAA CEUs.

We are adding a Silent Auction as a PAC fundraiser this year. Some of the items available include:

- **One week vacation in Maine**
- **An Ellicottville, NY ski resort getaway**
- **An Adirondack cottage get away**
- **Estée Lauder gift sets**
- **Saratoga Hilton stay with NYSSLHA Convention registration for 2012**
- **A basket of scrap book materials (value \$100)**

If anyone has items they would like to donate, it would be greatly appreciated. You can contact Tricia at tricia@nysslha.org or at 518-786-0947

State Budget Update

**By: Kathy Febraio, CAE, Executive Director
New York State Speech-Language-Hearing Association**

The State budget process has been fast and furious this year and the possibility of an on-time budget is very likely for the first time in many years. On February 3, Governor Cuomo released the Executive Budget and created task forces to address critical budget issues: Medicaid Redesign and Mandate Relief having the most impact on healthcare and education.

On February 24, Cuomo accepted, one week ahead of schedule, a report from the Medicaid Redesign Team (MRT). The task force met the Governor's Medicaid spending target contained in his Executive Budget by introducing a global cap on State Medicaid expenditures of \$15.109 billion. The report included 79 recommendations to redesign and restructure the Medicaid program to be more efficient. Cuomo added the task force's recommendations to his Executive Budget through his 30-day budget amendments.

The Mandate Relief Team, charged with relieving municipalities of ever-increasing tax burdens, released their report the first week of March. It contained several of the governor's Early Intervention (EI) proposals and a few new ones. The newer proposals were not added to the Executive Budget via the 30-day amendment process and were not included in the Assembly or Senate budget bills. Reports indicate the work of this task force took a long-term approach to affecting the tax burden placed on counties and municipalities.

On Saturday, March 12, the Senate and Assembly amended the Executive Budget proposal and introduced alternative legislation. The Senate and Assembly bills are not identical and each house passed their own bills on Tuesday, March 15. Beginning on March 16, both houses started negotiations in Joint Budget Conference Committees to reconcile the differences in their legislation.

Once the two houses negotiate their budget bills, they will present a unified budget to Cuomo and will again negotiate the differences between the Legislative and Executive Budgets. During these two sets of negotiations, any proposal/language can be deleted, added or modified. Where all three budgets agree, there will be little, if any, discussion.

So What's in the Budget?

Medicaid

One of the MRT's major proposals creates a global spending cap under Medicaid which would give the NYS Department of Health the unilateral authority to impose utilization controls, provider cuts or other spending reductions if state Medicaid spending exceeds 4% in annual growth. Also included in the spending cap proposal is a 2% across-the-board provider cut.

Executive Budget	Yes
Assembly Budget	Yes
Senate Budget	Yes

In addition, the MRT proposed limits to visits for speech-language-pathology, occupational therapy and physical therapy to a maximum of 20 visits each in a 12 month period. Individuals who are developmentally disabled are exempt. It is NYSSLHA's understanding that this is a compromise from the original proposal which eliminated these optional services altogether.

Executive Budget	Yes
Assembly Budget	Yes
Senate Budget	Yes

Increased co-pays for Medicaid, Family Health Plus, Medicaid Fee-for-Service, and Child Health Plus are proposed for audiology and speech services, among many other services. There were no co-pays for these services in the past. Patient populations who are exempt include individuals under age 21, pregnant women, nursing home residents, and individuals who are developmentally disabled. The co-pays are Audiologist: \$2.30 and Speech Pathologist: \$3.40.

Executive Budget	Yes
Assembly Budget	No
Senate Budget	Yes

(continued on page 9)

State Budget Update *Continued*

Early Intervention

Another 10% rate cut is proposed for providers working in the Early Intervention Program (EIP). This cut is in addition to a 10% average rate reduction imposed last year on Home and Community-based providers by the New York State DOH.

Executive Budget	Yes
Assembly Budget	No
Senate Budget	Yes

Commercial insurers would be required to cover EI services listed in the Individualized Family Services Plan. Insurers would be prohibited from denying coverage based on several factors. This mandate would increase the funding stream from the insurance companies.

Executive Budget	Yes
Assembly Budget	No
Senate Budget	No

Currently municipalities are responsible for all EI billing. The proposed Executive Budget and Senate bills require EI providers that receive more than \$500,000 in Medicaid revenue annually to directly seek reimbursement from Medicaid and private insurance companies prior to seeking payment from municipalities for EI services.

Executive Budget	Yes
Assembly Budget	No
Senate Budget	Yes

Budget Advocacy

NYSSLHA conducted a lobby day on February 14 and disseminated several Calls to Action on these issues generating phone calls, district office visits and letters to our members' legislators. Because this information changes rapidly, NYSSLHA primarily communicates legislative updates through our E-Mail blast system. If we do not have an E-Mail address for you, and you would like to be more involved, please contact the office with that information. (status as of March 18, 2011).

DOH Administrative Actions for EI

In addition to budget proposals, the DOH intends to implement several proposals through administrative actions which do not require legislative approval and are, for that reason, difficult to influence.

The basic and extended billing rates will be replaced by fifteen minute increment billing. Current rates are defined as covering a 45 minute therapy session, so municipalities that have adopted the 30 minute therapy session as the basic visit will be most impacted. It is anticipated that this will take effect in July 2011.

Imposing wage equalization and transportation factors will adjust reimbursement rates based on updated

Medicaid inpatient rates. DOH intends to increase the travel time assumption from 20 minutes to 25-30 minutes for this adjustment. It is anticipated that some municipalities will see a rate increase, while others will see a decrease. New York City, Orange county and Westchester are expected to see decreases, while more rural areas may see increases. Overall, the DOH anticipates a budget savings of \$900,000 in state fiscal year 2011-12, so it will be a reduction in funding, as well as, a shift in funding. This is anticipated to take effect April 1, 2011.

Capitated payments for EI service coordination will replace the current methodology of billing in 15 minute increments. The new model will resemble more of a fee for service rate rather than what federal health plans define as a capitated rate. DOH intends to define different rates for different levels of service coordination. Different responsibilities will be required at each level, as well as different documentation requirements. This is anticipated to take effect October 1, 2011. DOH will develop more information and detail for the different levels prior to implementation.

NYSSLHA and our lobbyists, Weingarten, Reid and McNally have been monitoring the budget process daily. To stay on top of these issues and to learn more about what you can do to make our voices heard,

join NYSSLHA at www.nysslha.org/join.

LISHA DONATES PROCEEDS FROM FALL CONFERENCE 2010 Raffles

By: Renee Fabus, Ph.D., Vice President and 2010 Fall Conference Chairperson

In March 2011, LISHA donated the proceeds from the Fall Conference 2010 raffles to two deserving organizations:

- **The Long Island Alzheimer's Foundation (LIAF),**
- **The Patchogue Rotary Animal Assisted Therapy (PRAAT).**

The LIAF's mission is to help alleviate the burdens imposed on all those affected by Alzheimers. LISHA funds will help defray the costs for their respite program, which is part of the Coping and Caring Conference in 2011.

PRAAT provides the joy and companionship of animals to children and adults who are ill, as well as to those who are physically and mentally challenged. LISHA's donation will be used to help defray the costs for etiquette seminars, which provide instruction to volunteers who interact with the disabled.

Both organizations were very appreciative of LISHA's generous donations.

[www. Liaf.org](http://www.Liaf.org)

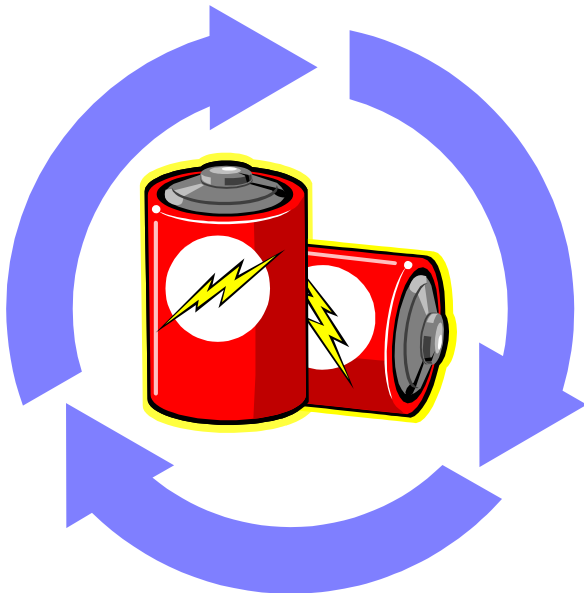


Audiology Corner



To Recycle or Not:

A Guide to NYS regulations regarding Hearing Aid Batteries



By: MarieAnn Zumpone-Weibley, Au.D, CCC-A

Many of us remember the old mercury hearing aid batteries which we were told to recycle. Then came the zinc-air batteries and confusion began. Are they safe to throw in the household waste? Are we supposed to recycle them? Do they contain mercury? The answers are easily available from the New York State Department of Environmental Conservation website at www.dec.ny.gov.

Everyone is familiar with recycling when it comes to cans, glass bottles and plastics. Unfortunately a lot of confusion lies in the disposal of batteries. As it stands now, zinc-air hearing aid batteries and rechargeable hearing aid batteries are supposed to be recycled. The zinc air batteries still contain small amounts of mercury, which if disposed of with household waste, could contaminate the surrounding soil and ground water. Rechargeable batteries contain cadmium, another heavy metal, which also could be problematic in a standard landfill. It is our job as audiologists to inform our patients to recycle their hearing aid batteries, and not throw them in the household waste. Encourage your patients to recycle their batteries, and give them suggestions on what to do with the old ones. Check with your local recycling office for details specific to your county or town.

Legislation is currently in place to eliminate all mercury in hearing aid batteries. In several states, these regulations will be placed into effect as early as July 2011. It is important that we start offering these completely mercury free batteries in our offices now. Patients should be given the option to switch, or at the very least, become familiar with the newer batteries. Change is difficult but we can help our patients one battery at a time.

Inclusion in this newsletter does not signify endorsement by LISHA, nor can LISHA be held responsible for misinformation. Information herein is included as a service to its members.

MEMBERS ON THE MOVE



Dear LISHA Members,

LISHA is a large and diverse regional organization with more than 1200 members. At this time, HEAR-SAY would like to launch a new column, “MEMBERS ON THE MOVE”, to acknowledge and celebrate the significant professional accomplishments of its members. This would include, but not limited to, new positions, publications, grants, awards, and appointments to state and national speech and hearing organizations. Networking is key to the success of this new endeavor. So, I invite you to submit all professional accomplishments of yourself or another LISHA member to joanrooney@verizon.net. Upon receipt of this information, I will contact the members for specific details and to secure permission to publish their accomplishments in HEAR-SAY.

Regards,

Joan Franzese-Rooney, M.A., CCC-SLP, CED
Editor in Chief

Dana Battaglia, M.Phil, CCC-SLP has been appointed an Assistant Visiting Professor at Adelphi University. She received a Graduate Research Grant from the Organization of Autism Research, and was the recipient of the 2011 of Regional Association Presidents Doctoral Scholarship. Her recent article “Celebrating a milestone in speech-language pathology,” appeared in the 12/21/2010 edition of *The ASHA Leader*. It can be retrieved from <http://www.asha.org/Publications/leader/2010/101221/Celebrating-a-Milestone-in-Speech-Language-Pathology.htm>. She collaborated on another article with M.E. McDonald and N. Philips entitled “Social Vocational Preparation Program-Part II: The Move from “pilot” to “program” that appeared in the 3/21/2011 edition of *Advance for Speech-Language Pathologists and Audiologists*.



Florence Myers, Ph.D., CCC-SLP recently received a Fulbright Specialist Award to engage in teaching and professional activities at Hong Kong University. She gave a series of workshops on fluency disorders; co-mentored a thesis on public attitudes and opinions toward stuttering in Hong Kong and Mainland China. She also reviewed the curriculum at Hong Kong University to infuse and inject greater coverage of fluency in the undergraduate program.



Lizbeth Dooley-Zawacki, M.S., CCC, L-Sp published an article in the *ASHA Division 16 – Perspectives* entitled “A Year in the Life of RTI: The First Year.” It can be retrieved from <http://div16perspectives.asha.org/cgi/content/abstract/11/4/137>. In her current position as a State Representative on the ASHA Advisory Council, she will be making Capitol Hill visits as part of grass roots efforts to campaign for ASHA’s agendas and issues.



Kim A. Scharoff, M.A., CCC-SLP has been named Supervisor 1 – Speech Services - Special Education in Nassau BOCES.



LISHA PRESENTS...

THE 21st ANNUAL AWARDS NIGHT 2011

Location:

NEW VENUE

East Meadow School District
East Meadow High School,
101 Carman Avenue
East Meadow, NY 11554
Wednesday, May 25, 2011

7:00—9:00 p.m.



PLEASE JOIN THE CELEBRATION!

The Long Island Speech-Language-Hearing Association cordially invites all award winners, family members, teachers, LISHA members and the community to join us in the celebration of our 21st Annual “**BETTER HEARING AND SPEECH MONTH**” Awards Ceremony. This event is free to all. Refreshments will be served. The following awards will be presented:

- **Joan Fox Awards to distinguished graduate students.**
- **“May is Better Hearing and Speech Month” Poster Contest Awards.**
- **Parent/Caregiver Awards honoring individuals who have demonstrated outstanding participation and support in furthering the communication skills of their child, spouse, parent, or friend.**

If you have questions contact:

Melissa Kreuder or Denise McKeon

info@lisha.org or (516) 626-8000

Speech Interns?

A bit of Information

Students looking for employment as a speech intern – this would be students who are **NOT** ready to engage in a CFY position:

- The professions of speech-language pathology and audiology are licensed by the State of New York. Students may not engage in any employment or direct client contact without a license. This means individual practice or in a clinical setting.
- Engaging in any practice without a license that is covered under the scope of practice of licensed speech pathology or audiology will result in prosecution under the laws of New York State, and could prevent you from practicing altogether.
- The only **EXCEPTIONS** are: clinical practicums that are arranged through your university and student teaching.
- Any licensed members that hire an “intern” can also be subject to prosecution. University placements for practicums and student teaching are the only exceptions.
- Shadows need letters, from their universities, acknowledging that observations are required.

Direct from the New York State Office of Professions State Education Department

Further questions contact: speech@mail.nysed.gov

Douglas Lentivech, Executive Secretary 518-474-3817 ext 100



WE NEED VOLUNTEERS!

The Board of Officers of LISHA is actively recruiting members who would like to become more involved in the organization.

We welcome and encourage your participation.

NO COMMITMENT IS TOO SMALL

If you would like to participate contact LISHA at:

Hotline number 516-626-8000

E-Mail at: info@lisha.org

2011 Honors and Awards Nomination Form

PREPARATION OF NOMINATION FORM FOR HONORS AND AWARDS

Note: **Previous award recipients are eligible for nomination in other categories.**

Only completed written applications will be considered for any award.

Nomination _____ for the _____ Award

Honors of the Association:

This award is designed to acknowledge an individual who has provided outstanding service to the association and to the profession. The parameters of the award include service, contribution to the advancement of knowledge, leadership and outstanding teaching. Individuals attentive to legislative activity, administration, research contributions and a lifetime of innovative clinical practice are also considered for the honor. The individual selected must be a member in good standing and presents with a distinguishing criteria related to the profession of communication sciences and disorders. Honors of the Association is the highest award given by this organization. It is suggested for yearly consideration, though not mandated.

Outstanding Service Award:

This award is designed to recognize a LISHA member, who has offered outstanding and exemplary service to the association on a broad and continuing basis. Any member of the association may be considered for this honor by working beyond the expected level of responsibilities and functions associated with their elected, volunteer or general membership responsibilities. Consideration for nomination may also include consumer advocacy, legislative or other governmental affairs activity or public awareness for the professions, communication sciences or disorders and/or the association. This award may honor a member who not only contributes via commitment to LISHA, but to other organizations by supporting and embodying the spirit of volunteerism. Student members in good standing may be considered for this award. This award is intended to be a yearly award.

Special Citation:

This award is given to an individual who reflects the interests and intents of professionals in the field of communication sciences and disorders. Consideration is given to members and non-members alike. The Recipient is a worthy individual, program or organization who provides unique and special services on behalf of Speech-Language and Hearing professionals or in the interests of LISHA. It is not to be considered a mandated yearly award.

Mimi Katzen Award:

This award is given to a member, program or institution engaged in rehabilitation and/or research relating to disorders of human communication sciences and disorders. All professional practice locations are eligible as this award is named in honor of a practicing speech-language-pathologist. This award is intended to be a yearly award.

(continued on next page)

Nominations must be received by June 9th

Send the completed nomination form and all required materials to:

LISHA – PO Box 133, Mastic Beach, NY 11951

Nominator

- Name
- Address
- Phone Number
- E-Mail

Nominee

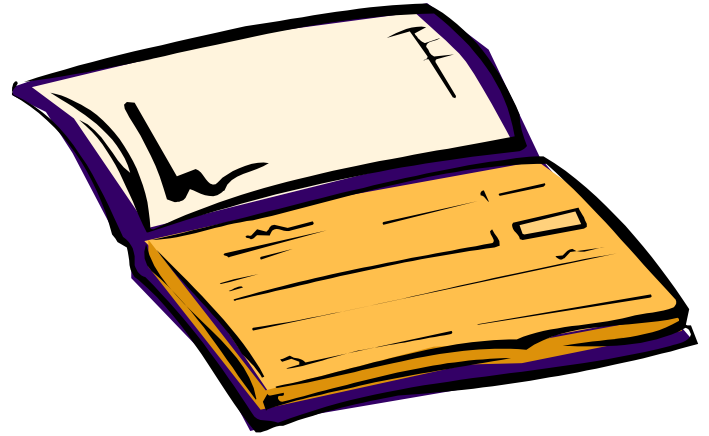
- Name and Address
- Occupation, Profession, Employer
- Phone Number
- LISHA Member (yes or no) List positions held if applicable
- Nominee's Education, Training, Licensure/Certification Status, Institutions Attended, Degrees and Awards (attach Resume if available)
- Nominee's Professional Affiliations (including LISHA), number of years and positions held.
- Nominee's Professional Contributions and relationships within the field including, clinical service, research, training, articles, volunteerism, school community leaders, all others that support the communication field.
- Nominee's accomplishments in staying professionally up-to-date
- List Teaching/Clinical Experience
- Describe nominee and circumstances and/or actions that qualify this nominee for this award

Signature of Nominator _____ Date _____

DOCTORAL AWARD

PURPOSE:

To award a speech-language, audiological and/or speech sciences doctoral candidate with a **\$1000** award for promoting research within the field of communication sciences and disorders.



CRITERIA:

- A. LISHA member in good standing
- B. Verification of doctoral status by program chair
- C. Current transcript
- D. Current vitae
- E. Provide an outline of planned doctoral level research
- F. Two letters of recommendation/support (one from Department Chairperson required)

DEADLINE FOR SUBMISSION: July 1, 2011

- The completed application should be sent to LISHA in one packet.
- Mail the packet to : LISHA, PO Box 133, Mastic Beach, NY 11951-0133
- The Student selected for the award will be notified and will be invited, with guests, to our annual Award Cocktail Party at the Crest Hollow Country Club in Woodbury on October 21, 2011.
- Candidates may reapply in subsequent years, if they have not previously won the award. All Award winners must wait a period of two years before re-applying again.



(Continued on the next page)

DOCTORAL AWARD—*continued*

STUDENT INFORMATION

Name : _____ LISHA Membership # _____

Address: _____ Daytime Phone : _____ Cell Number : _____

E-Mail : _____ University: _____

Anticipated Degree (circle): Au.D. Ed.D. D.A. Ph.D. Other (specify): _____

University: _____ Department Chairperson: _____

Department Chairperson's Phone : _____ & E-Mail : _____

Applicant's Signature

Date

RESEARCH PROFILE

Name : _____ Area of Research : _____

Population: _____ Adult (specify): _____ Child (specify): _____

Topic: _____

Additional Information:

Brief synopsis of your proposal:

Required: Outline of your planned research

I verify that _____ is a full time doctoral student at

Student

University

Signature of Research Department Chairperson: _____

Contact: phone & E-Mail: _____

SAVE THE DATE

October 21, 2011

ANNUAL FALL CONFERENCE

Location: Crest Hollow Country Club - 8325 Jericho Turnpike, Woodbury, NY

Time: 7:30am Registration - 3:30pm - .5 CEUs offered ASHA and AAA

Speakers:

J. Scott Yaruss, Ph.D., CCC-SLP

“Practical Treatment Strategies for School-Age Children Who Stutter”

Lori A. Frost, M.S., CCC-SLP

“Communication Assessment and Treatment for Young Children with ASD”

Cathy Lazarus, Ph.D., CCC-SLP, BRS-S

“Management of Swallowing Disorders in Treated Head and Neck Cancer Patients”

Tom Thunder, Au.D., FAAA, INCE Bd Cert

“Forensic Audiology: A New Frontier in the American Legal System”



**Code: BDLISHA
Bob Domingo.**



Upcoming Events

April 5, 2011

**"An Introduction to Collaborative Problem Solving:
Understanding and Helping Kids with Social, Emotional, and Behavioral Challenges"**

Presenter: Monica DeSchryver, Ph.D.

Location: The Campo Salisbury Center, 718 The Plain Road, Westbury NY

Time: 5:30pm Registration - 9:00pm - .3 CEUs offered (ASHA)

May 18, 2011

"Audiology Made Simple for the Speech/Language Pathologist

Presenter: Susan Antonellis, Au.D., CCC-A and Marie Zumpone-Weibley, Au.D., CCC-A

Location: Touro College Jacob D. Fuchsberg Law Center -

Time: 5:30pm Registration - 9:00pm - .3 CEUs offered (ASHA)

May 25, 2011

"May is Better Hearing and Speech Month"

This is a FREE Event! Come Join us and Celebrate!

NEW Location: East Meadow High School, at 101 Carman Avenue, East Meadow, NY.

Time: 7:00pm—9:00pm

Joan Fox Award to distinguished graduate students.

"May is Better Hearing and Speech Month" Poster Contest Awards

Parent/Caregiver Award honoring individuals who have demonstrated outstanding participation and support in furthering the communication skills of their child, spouse, parent, or friend.

June 4, 2011

"Learn and Shop"

Medical Terminology Pediatric and Adults

Presenter: Kathleen McCloskey, M.A., CCC-SLP

Location: Club Indigo Riverhead, NY

Time: 8:30am Registration - 12:00pm - .3 CEUs offered (ASHA)

June 21, 2011

"Infection Control to Satisfy the NYS Requirement" AND

"Legislative Laws for NYS Hearing Aid Dispensing"

Presenters: Barbara Kruger, Ph.D., CCC-A and Joseph Vespe, M.S., M.B.A.

Location: Campo Salisbury Center, 718 The Plain Road, Westbury, NY 11590

Time: 5:30pm Registration - 9:00pm - .3 CEUs offered (ASHA and AAA)

August 3, 2011

"Links to Language: Interactive Technology Resources for Your Interventions"

Presenters: Sean J. Sweeney, M.S., M.Ed., CCC-SLP

Location: Campo Salisbury Center, 718 The Plain Road, Westbury, NY 11590

Time: 5:30pm Registration - 9:00pm.3 CEUs offered (ASHA and AAA)

October 21, 2011

ANNUAL FALL CONFERENCE

Location: Crest Hollow Country Club - 8325 Jericho Turnpike, Woodbury, NY

Time: 7:30am Registration - 3:30pm - .5 CEUs offered ASHA and AAA

Speakers:

J. Scott Yaruss, Ph.D., CCC-SLP - "Practical Treatment Strategies for School-Age Children Who Stutter"

Lori A. Frost, M.S., CCC-SLP—"Communication Assessment and Treatment for Young Children with ASD"

Cathy Lazarus, Ph.D., CCC-SLP, BRS-S—"Management of Swallowing Disorders in Treated Head and Neck Cancer Patients"

Tom Thunder, Au.D., FAAA, INCE Bd Cert—"Forensic Audiology: A New Frontier in the American Legal System"