

Long Island Speech-Language-Hearing Association



HEAR-SAY

Published Quarterly—January 2011

Volume 35, Issue 1

Newsletter Highlights

Page

- 3 Vice President Report
- 6 Fall Conference Reviews
- 8 NYSSLHA Update
- 9 Audiology Corner
- 10 Our Team Pictures
- 13 Past President Photos
- 14 Student Concerns
- 20 Award Nomination Form
- 23 Upcoming Events
- Find the LISHA President in the Police Car Ride and win a 2G Flash drive (look for details in this issue)

LISHA

PO Box 133

Mastic Beach, NY 11951

Office - 516-626-8000

or 631-395-2770

Fax - 631-657-3480

info@lisha.org

President's Message

LISHA RISES TO TECHNOLOGICAL EXCELLENCE

This year's Fall 2010 conference was the first to "go green." I am sure you have already heard the buzz. Our members and attendees were as excited about this transition as we were and we are proud that LISHA took this initiative to move into the electronic world. Congratulations to Dr. Renee Fabus and her conference committee for an outstanding conference.

The next technological advancement is our newsletter-HEARSAY- as you now receive for the first time our newsletter **on-line**. Just another way for the organization to "go green." If for any reason, you cannot access the newsletter on-line, just call us and we will assist you. LISHA is following the wave of the future.

Our councilors are working diligently to bring you more workshops on topics you have requested. We have already scheduled some workshops early in the new year. In January, a workshop will be held about the new IEP format regulations. Please check our website for dates and times. I look forward to serving you another year as president.

You have already received the LISHA ballot for 2011. I hope you returned your ballot with your vote. This is your right as a member. Next year we hope to give you more choices on the ballot and that is up to you. We need more people to step up and serve.

In October, the Student Concerns Committee mentored by Karen O'Sullivan Seifert held a workshop that engaged about 52 students from local universities. Upon leaving, we asked if any of them would be willing to volunteer for the organization and we obtained about 30 signatures. We will be calling upon these students in the new year to join us in various activities. My hope is to have these students, become active in LISHA and continue throughout their careers. Again, I urge members to think about becoming more actively involved in the organization. Any small amount of time that you can give would be appreciated.

If I can assist any member, or if you want to know more about participating in LISHA, please do not hesitate to contact me via e-mail at info@lisha.org.

Yours in service,

Susan Antonellis, Au.D., CCC-A

2010 - 2011 LISHA President

HEAR-SAY

Phone - (631)-395-2770
Hotline - (516)-626-8000
info@lisha.org

Editor-in-Chief

Joan Franzese Rooney

Design & Layout

Pat Luft

Editorial Committee

Susan Antonellis

Lois M. Bennardo

Renee Fabus

Florence L. Myers

Renee Trachtenberg

Sandra White

Staff Writers

Marie Ann Zumpone-Weibley

Frank Volz

Dianne Slavin

Janet R. Schoepflin

Christine Morvay

Heather Lubrano

Jennifer Hartman

Kathy Febraio

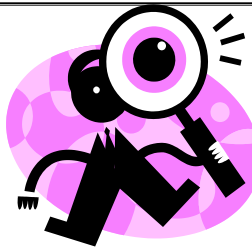
Louisa Arana

Susan Antonellis

WE NEED VOLUNTEERS!

The Board of Officers of LISHA is actively recruiting members who would like to become more involved in the organization. Given the increase in membership, more volunteers are desperately needed. We welcome and encourage your participation.

**NO COMMITMENT
IS TOO SMALL**



Look for the LISHA President in the Police Car in this issue, email the code on top of the picture to info@LISHA.org.

The first five emails will receive a FREE flash drive!

You must be a current member to win!

Fall Conference

“Passport to Excellence in Speech-Language and Hearing”

By: Renee Fabus, Ph.D., CCC-SLP, Fall 2010 - 2011 Conference Chairperson and Vice President

Everyone who attended the Fall Conference received their “**Passport to Excellence in Speech- Language and Hearing**” at The Crest Hollow Country Club, in Woodbury, on October 22, 2010. My conference committee worked diligently and dedicated themselves to provide you an outstanding conference this year. We could not have presented such a high quality conference without the professionals:

Neil Bauman, Ph.D.

“Ototoxic Drugs and Our Ears – Things Are Not Always What They Seem”

Moderator: Janet R. Schoepflin, Ph.D., CCC-A, Fellow AAA



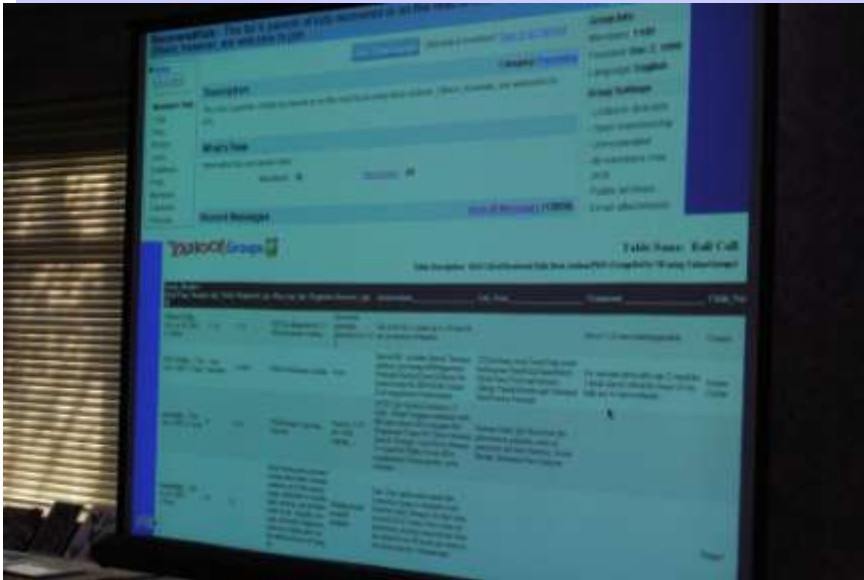
Audrey L. Holland, Ph.D.

"Clinical Aphasiology Update: New Issues, New Concerns, New Treatments"

Moderator: Dianne Slavin, Ph.D., CCC-SLP



Judith Kuster, M.S., CCC-SLP
"Netting" for FREE Information and Intervention Materials
Moderator: Frank Volz, Ph.D., NYS/SLP



Judy Montgomery, Ph.D., CCC-SLP
"Vocabulary Interventions for Children and Youth: Applying New Evidence"
Moderator: Christine Morvay, M.S., CCC-SLP



2010 LISHA Award Recipients

We want to applaud both the professionals and their moderators for a job well done. In addition, we want to congratulate the 2010 LISHA Award Recipients:

Honors of the Association

Paul R. Esposito, Au.D., CCC-A

In recognition of distinguished contributions, outstanding service and professional devotion to the field of speech, language and hearing.

Outstanding Service Award

Francine S. Pickus, M.S., CCC-SLP, TSHH

In recognition of her outstanding and exemplary service on behalf of the Long Island Speech-Language-Hearing Association.

Mimi Katzen Memorial Award

Steven M. Asofsky, M.A., LSP, CCC

In recognition of his unyielding commitment to the needs of individuals with speech, language and hearing impairments.

Doctoral Award

Jennifer Hartman

In recognition of dedication to expanding the base of knowledge in the field of communication disorders.

The Long Island Speech-Language-Hearing Association sincerely thanks all of our award recipients for their dedication to our profession.

We look forward to seeing you back again next year at our Fall Conference on October 21, 2011. We have the following speakers already scheduled for you:

J. Scott Yaruss, Ph.D., CCC-SLP

“Practical Treatment Strategies for School-Age Children Who Stutter”

Lori A. Frost, M.S., CCC-SLP

“Communication Assessment and Treatment for Young Children with ASD”

Cathy Lazarus, Ph.D., CCC-SLP, BRS-S

“Management of Swallowing Disorders in Treated Head and Neck Cancer Patients”

Tom Thunder, Au.D., FAAA, INCE Bd Cert

“Forensic Audiology: A New Frontier in the American Legal System”

If you have any questions or you are interested in volunteering for the Fall Conference, please don't hesitate to contact me, Renee Fabus, at info@lisha.org.

I look forward to seeing all of you next year!

Until then, remember,

“There are three ingredients in the good life: learning, earning and yearning.”

~ Christopher Morley

2010 Fall Conference Reviews

2010 Fall Conference Reviews

“Netting” for FREE Information and Intervention Materials **Judith Kuster, M.S., CCC-SLP**

Review By: Frank M. Volz, Jr., Ph.D., LISHA Moderator

For those LISHA members who were as fortunate as I was to attend Judy Kuster’s short course on “Everything you need to know about exploring the visible and invisible web, and were afraid to ask,” you got a special treat.

Judy took us for a search engine ride through Googleland with brief stops at Boolean searches, the Cochrane Library, Evidenced Based Practice, language, speech, ASD, fluency, AAC and lots more. She explored reproducibles, a virtual library, clinical materials, neurological disorder resources and even RootsWeb.com (a free genealogy site).

Judy’s presentation was so interesting and energized that when I viewed her audience I could not find a single person sleeping and that’s a great thing!

For those of you who were not so fortunate, I suggest that you visit your flash drives and <http://www.mnsu.edu/comdis/kuster2/spttherapy.html>.

“Vocabulary Interventions for Children and Youth: Applying New Evidence” **Judy Montgomery, Ph.D., CCC-SLP**

Review by: Christine Morvay, M.S., CCC-SLP

Judy Montgomery, Ph.D., presented an outstanding workshop at this year’s Annual Fall Conference. Her program was based on identifying different vocabulary types used by SLPs, recognizing evidence-based practices for state standards, and measuring student progress in our schools.

She explained the differences between language vocabulary and reading vocabulary, vocabulary development and the parameters of language, including: phonology, semantics, syntax, morphology and pragmatics. Dr. Montgomery spoke of the daunting vocabulary demands for daily communication vs. academic instruction and deciphered the myth of age vs. grade level vocabulary. She incorporated many wonderful activities that were of practical use to those SLPs based in the school system, and demonstrated how to modify them according to subject matter, grade level and the students’ vocabulary knowledge.

Her explanation of the crucial role of working memory in vocabulary development and usage was helpful to the participants. She also presented strategies for improving students phonological awareness skills as they correlate to later developing reading readiness skills.

Dr. Montgomery’s presentation was very engaging as she included audience participation to demonstrate various therapeutic interventions. The audience was riveted by her easy-going style, sense of humor and knowledge base. One participant stated, “She understands our needs as school-based SLPs and is one of ‘us’.

“Ototoxic Drugs and Our Ears—Things are not Always What They Seem”

Neil Bauman, Ph.D.

Review By: Janet Schoepflin, Ph.D., CCC-A, Fellow AAA

Dr. Neil Bauman, hearing loss coping skills specialist, researcher, and author of numerous publications concerning hearing loss presented the audiology session of the fall conference entitled, “Ototoxic Drugs and Our Ears—Things Are Not Always What They Seem.”

Dr. Bauman’s presentation was a natural extension of his forthcoming book, *Ototoxic Drugs Exposed, 3rd Edition*, the preparation of which involved a critical review of over 20,000 pages of pharmaceutical and herbal resource materials, including the *Physician’s Desk Reference* (PDR) and the *PDR for Herbal Medicines*, in addition to web sites, blogs, and personal testimonies. Dr. Bauman’s analysis revealed that over 1000 drugs, herbs, and chemicals are known ototoxic agents, producing effects on the auditory and vestibular systems. Cochlear effects include hearing loss, tinnitus, hyperacusis, a fullness sensation in the ears, and auditory hallucinations (which he has termed “Musical Ear Syndrome”). Vestibular effects include dizziness and vertigo, ataxia, and nystagmus. He further reported these additional vestibular side effects: visual problems, fatigue, memory problems, muscular aches and pains, nausea, and others.

Dr. Bauman’s presentation also included a review of the ototoxic effects of organic solvents and heavy metals, which can be found in the environment, in the home, and in the workplace. Such agents may exist in automobile emissions, lawn care products, paints, cleaning supplies, fungicides, and manufacturing materials. He reported on evidence that the ototoxic effect of many of these products is enhanced by noise exposure. In one study, the synergistic effect of noise and toluene increased the risk of hearing loss 2750% over an age-adjusted normal control group.

Dr. Bauman also discussed the risk factors for ototoxicity, such as age (very young or elderly), poor health, heredity, noise exposure, previous auditory pathology, kidney disease, and improper drug dosage or drug hypersensitivity. He advised audiologists to be alert to these risk factors and to help their patients to reduce them through informational counseling. A lively discussion ensued on the form of this counseling vis a vis the relationship of audiologists to otolaryngologists and other medical professionals.

In the last section of his talk, Dr. Bauman discussed the efficacy of high frequency hearing testing to monitor ototoxic effects, citing a study that indicated that 67-86% of cases with drug-induced hearing loss were able to be identified by high frequency audiometry. His suggestion was to use a 5-frequency protocol, specific to the individual’s own audiometric configuration.

Dr. Bauman concluded his talk with a 5-key point summary. He informed audiologists to (1) think drugs, (2) think chemicals, (3) think synergistic effects, (4) think noise, and (5) think high-frequency hearing testing when assessing patients.

Additional information concerning Dr. Bauman’s book and other resources on hearing loss can be obtained on his web site: www.hearinglosshelp.com.

“Clinical Physiology Update: New Issues, New Concerns, New Treatments”

Audrey Holland, Ph.D.

Review By: Dianne Slavin, Ph.D., CCC-SLP

Audrey Holland is a highly respected and much recognized aphasiologist, whose views of the evaluation and treatment of people with aphasia have evolved with new research findings regarding brain plasticity, and an expanding view of aphasia rehabilitation. Recent research has informed the field and has led to new applications of traditional treatment paradigms as well as new paradigms in approaching long term aphasia rehabilitation.

Her informative and clinically relevant presentation began with a review of research findings related to neuroplasticity following brain injury. High-lighting the work of Raymer et al (2008) who identified ten rules for “experience-dependent neuroplasticity” such as: use it or lose it; use it and improve it; salience matters, and repetition matters. In addition, research in cognitive science, specifically, the apparent connectivity between language production, language processing, memory and emotion further informs clinical practice by challenging the notion of localization labels in the diagnosis for aphasia as “Broca’s” or “Wernicke’s.” (*continued on page 8*)

She went on to explain how models of aphasia rehabilitation have also evolved with dissemination of the World Health Organization's most recent revision of International Classification of Disability and Functioning (ICF). While application of the ICF is not readily applicable to aphasia rehabilitation, the notion of a broader more holistic view of aphasia rehabilitation is becoming more widely accepted. This integrated approach is grounded in social theory and assesses the impact of aphasia in all aspects of the person's life. With the person with aphasia as the center of intersecting circles in a ven diagram, there is a need to assess not only the speech and language impairment related to the aphasia, but also its impact on psycho-social issues related to personal identity and relationships, participation in meaningful life activities and barriers to participation. The concept of a more client centered rehabilitation approach to aphasia rehabilitation called the "Life Participation Approach to Aphasia" has been endorsed by ASHA.

Dr. Holland described two newer therapeutic approaches to aphasia including one developed by Thompson et al (2007) which was based on linguistic complexity theory, and the other constraint induced language therapy which has produced mixed results. Of course, more traditional treatment approaches like PACE and scripting continue to be efficacious. New software applications were also described including one, not yet released program, that once personalized with scripts and other speech and language exercises, will provide virtual speech/language therapy with a avatar SLP.

Finally, the presentation turned to the growing number of aphasia groups and centers based on the socialization model of aphasia rehabilitation. The goal of these programs is to foster self-esteem, improve communicative ability, educate families and communities about aphasia, promote self advocacy and decrease social isolation.

Dr. Holland's presentation was informative, clinically relevant and stimulating. Many thanks to her for taking time out of her busy schedule to spend a day with us!

NYSSLHA UPDATE

Protection of the Professions

By: Kathy Febraio, CAE

Executive Director, New York State Speech-Language-Hearing Association

Now is the time to consider what you can do to protect the profession. By supporting NYSSLHA's efforts through membership, grassroots participation, and a PAC contribution you can help us educate legislators and regulators on the work we do and the affect state budget cuts and regulatory changes have on the clients we serve.

Consider that we have a new Governor that needs to close an estimated \$9 billion budget gap next fiscal year, not to mention a nearly \$1 billion deficit for the remainder of this year. It is no secret that healthcare and education cuts are being considered because the "low hanging fruit" has already been picked.

In addition, control of the NYS Senate remains too close to call nearly one month after the election. Without a clear majority, we could experience the same chaos and gridlock that we saw this past year which will only exacerbate the budget approval process for Governor-elect Cuomo and challenge NYSSLHA to educate legislators on our issues.

The Senate majority determines the membership and chairs of the committees we will need to work with during the coming year, including the Health, Insurance, Education, Higher Education and Consumer Protection Committees. We may not know who the key Senators are for quite some time—which leaves us less time to educate them before they start budget negotiations.

You can help us by joining NYSSLHA or renewing your membership at this critical time. To renew, visit www.nysslha.org/renew. If you are a new member, you can join at www.nysslha.org/join. Or you can use find an application for download at www.nysslha.org/join.

It is essential that we work together to protect our professions.

Audiology Corner



Infection Control in the Audiology Office during Flu Season

By: Marie Zumpone Weibley, Au.D., CCC-A

It's cold and flu season again, making it the perfect time to remind everyone about the importance of proper infection control procedures. Most of us have attended the required state Universal Precautions courses to teach us the do's and don'ts of infection control in our clinics. In addition, we have all heard the public service reminders regarding reducing transmission of the cold and flu germs. It's important to remember you don't need to become a germophobe to keep communicable illnesses to a minimum.

Here are a few reminders from the general infection control procedures which could aid in your war on germs:

1. **Make sure you and your staff are familiar with Universal Precautions as set by the Center for Disease Control.**
2. **Establish rules for all areas of your infection control procedures, for example, all patient hearing aids should be placed in a disposable cup not in an ungloved hand or on unprotected desks or countertops.**
3. **Wash your hands before and after every patient using soap and water. Waterless hand sanitizer should be used only for situations where soap and water are not readily available.**
4. **Wipe down headphones, bone oscillators, BSER equipment, otoscopes, real ear equipment ,etc. after every patient.**
5. **Establish procedures for wiping down common areas (door knobs, counter tops, banisters etc) with anti-bacterial wipes daily.**

Finally here are some common sense ideas to help combat germs in your office.

1. **Keep a box of tissues on all desks and in the waiting room and testing areas.**
2. **Make sure the restrooms have soap and disposable paper towels available.**
3. **Don't eat where you work. (keep food away from testing areas and hearing aid repair areas).**
4. **Cough or sneeze into your elbow. Do not use your hands, and if you do ,wash them immediately.**
5. **Keep waterless antibacterial available for all staff and patients.**
6. **If you are sick, stay home. No one wants to catch a cold from the martyr who dragged themselves to work.**

If we all apply these simple rules we can reduce the transmission of colds and flu this winter and make it more pleasant for everyone.

Inclusion in this newsletter does not signify endorsement by LISHA, nor can LISHA be held responsible for misinformation. Information herein is included as a service to its members.

Our Team



(From top, left to right)

- **Dr. Renee Fabus**
- **Dr. Susan Antonellis**
- **K.T. Kamins**
- **Rochelle Trauber**
- **Christine Morvay**
- **Rosanne Schoen**
- **Kim Scharoff**



Our Team—continued

(From top, left to right)

- **Melissa Kreuder**
- **Fran Pickus**
- **Allison Lynch**
- **Janet Schoepflin**
- **Jennifer Hartman**
- **Susan Broderick**
- **Pat Luft**
- **Marie Zumpone-Weibley**



(From top, left to right)

Our Team - continued

- **Dr. Paul Esposito and Dr. Susan Antonellis**
- **Dr. Susan Antonellis and Dr. Donna Geffner**
- **Our Members**
- **Spencer and Sophia Asofsky**
- **Emily Santamarina, Shelley Trauber and Sheryl Winkler**



Past President's Round Up

(From Top, left to right)

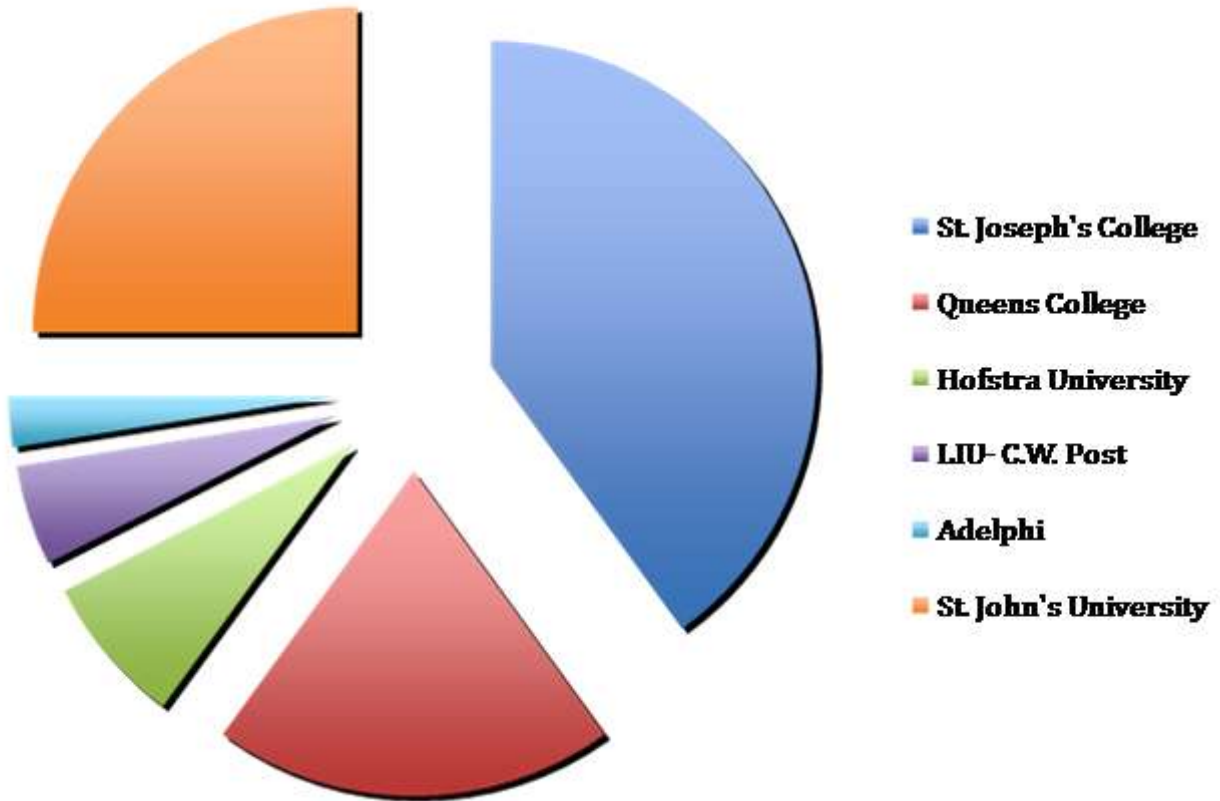
- Rosanne Schoen - 2006
- Dana Battaglia - 2009
- Anne Gordon - 1987-88
- Deanna Glassmann - 1993
- Christine Morvay - 2004-05
- Joanne Quinoa - 1995
- Charlotte Plotnick—1998



Code: LISHA2011



Colleges & Universities Attending October 3, 2010 Student Hosted Conference



**By: Lousia Arana, Jennifer Hartman and Heather Lubrano
The Student Concerns Committee**

On October 3, 2010 the Student Concerns Committee hosted a conference for undergraduate and graduate students from the Queens and Long Island area. LISHA was fortunate enough to have Dr. Donna Geffner present information about “Careers in Speech-Language Pathology and Audiology: What you need to know.” Dr. Geffner’s dynamic presentation included information about the scope of practice, requirements, and certifications needed for both SLPs and Audiologists. In addition, representatives from some of our local universities attended the event to provide students with information and answers to some frequently asked questions. The event was a success and allowed many students to learn or clear up any misconceptions they may have had about the profession.

This opportunity allowed several students to explore the various settings where it is possible for them to work as a Speech-Language Pathologist or Audiologist. The conference raised awareness on several issues, which often intimidate students and even reached out to some high school students who were looking to get a head start on their future careers.

Students are often so absorbed and worried about getting into graduate schools and all of its requirements, that they forget to consider what setting or population they would enjoy working with. This conference allowed students to take a step back from their constant worrying, and remind them that there are so many options for them as future SLPs and Audiologists.

The Student Concerns Committee would like to take this opportunity to express our gratitude to Karen O’Sullivan Seifert and Dr. Susan Antonellis for their support and guidance in planning this successful event.

2010 AWARD RECIPIENTS

Honors of the Association

Paul R. Esposito, Au.D., CCC-A

In recognition of distinguished contributions, outstanding service and professional devotion to the field of speech, language and hearing.

Outstanding Service Award

Francine S. Pickus, M.S., CCC-SLP, TSHH

In recognition of her outstanding and exemplary service on behalf of the Long Island Speech-Language-Hearing Association.

Mimi Katzen Memorial Award

Steven M. Asofsky, M.A., LSP, CCC

In recognition of his unyielding commitment to the needs of individuals with speech, language and hearing impairments.

Doctoral Award

Jennifer Hartman

In recognition of her dedication to expanding the base of knowledge in the field of communication disorders.

Honors of the Association

Paul R. Esposito, Au.D., CCC-A



“LISHA is in sound financial order!”---This would echo proudly at every board meeting from the mouth of our past treasurer, who served us for over fifteen years.

Dr. Paul Esposito received his Au.D. degree in 2010 from the A.T. Still University of Health Sciences, his M.A. degree in 1978 from the University of Connecticut and his B.A. degree in Speech Pathology/Audiology from Brooklyn College in 1976.

Dr. Esposito has served in various professional realms including; a clinical supervisor at Hofstra University and an adjunct instructor at St. Joseph’s College. However, his passion is in private practice. He has been in a consulting audiology practice with a local ENT group since the year 2000.

Dr. Esposito is a member of several professional organizations including the American Academy of Audiology, the Educational Audiology Association, American Speech-Language Hearing Association, New York State Speech-Language-Hearing Association, and the Long Island Speech-Language-Hearing Association. He served on the Executive Board as treasurer of LISHA for over 15 years and he also served in other capacities prior to serving in that position.

Personally, Dr. Esposito resides in Levittown with his wife, Beverly and their daughter. He is a man of few words, but he has certainly contributed an enormous amount of time to LISHA and we should be proud to present the Honors of the Association to Dr. Paul Esposito.

Mimi Katzen

Steven M. Asofsky, M.A., LSP, CCC



Mr. Asofsky has been a practicing speech-language pathologist since 1994. Since then, he has become the president of the South Shore Center for Speech, Language, and Swallowing Disorders, LLP. In addition to being the President of this organization, he maintains a clinical caseload. He has a multitude of certifications which enhance the breadth and depth of his knowledge, and directly positively impact the patients with whom he works. Mr. Asofsky has excellent administrative skills and is adored by his employees. Through his contacts at South Shore Center, Mr. Asofsky has established a multitude of consultancies (e.g., Homecare, nursing home facilities, hospitals, etc).

Mr. Asofsky maintains current knowledge regarding Medicaid and Early Intervention reform. He has published a piece in the Advance for Speech-Language Pathologists on the topic of Dysphagia. He not only attends conferences regularly, but presents workshops as well. His specific area of expertise is in Dysphagia, using FEES and FEESST for assessment purposes.

Mr. Asofsky is a family man, whose wife (Mrs. Mary Boghosian–Asofsky) and two children, Spencer and Sophia parallel his disposition. His kindness and his generosity are boundless, and his professionalism under the direst of scenarios is not only admirable, but unparalleled. Mr. Asofsky frequently supervises graduate students in clinical practica. Further, he is always willing to open his practice for clinical observation to help his colleagues in academia. Finally, Mr. Asofsky currently serves on committees and as a councilor on the LISHA Board of Officers, and has done so for over a decade.

Outstanding Service Award

Francine S. Pickus, M.S., CCC-SLP, TSHH



Francine (Fran) Pickus has been a member of LISHA for (25+) years where she has served in several board positions including: Hospitality Chair, Private Practice Study Group Coordinator and Fall Conference Committee member.

Fran received her Bachelor's degree in 1978 from Queens College and her Master's degree in 1981 from Brooklyn College. She worked for the LI Developmental Center and at BOCES III as a speech and language pathologist. Today, her primary setting is in the private practice sector where she has experience with numerous speech and language disorders including: articulation/phonology, fluency, voice, language and pragmatics.

Fran is a member of LISHA, NYSSLHA and ASHA. She has served on the LISHA Board and has always been willing to volunteer her time and services to the Association. Fran puts forth excellent effort in all that she sets her mind to. She has a very positive attitude and provides encouraging words for her colleagues. There has never been a task asked of Fran that she hasn't completed with a smile.

While serving on the LISHA Board, Fran has participated in, coordinated and facilitated Private Practice Study Groups where various topics have been discussed throughout the years.

As a member of the Fall Conference Committee, Fran has served in the capacity of Audio-Visual Chair and Promotions Committee Member.

Her kind and caring demeanor draws you to her. Fran is a compassionate woman who puts her clients' needs first. She is conscientious and seeks further knowledge within the field by attending continuing education activities. Fran has received the ASHA ACE Award.

On a personal note, she has been married to her husband, Jay, for 31 years. They have two children, Aaron, 26 and Heather, 22. Together they enjoy entertaining family and friends, travel and taking cruises. Fran has been active in her childrens' PTAs when they were younger and her temple as well.

**It is easy to see why she is most deserving of the 2010 LISHA Outstanding Service Award!
Mazel Tov Fran!**

Doctoral Award

Jennifer Hartman



Jennifer Hartman is the youngest of four siblings who comes from a family of two Deaf parents, a mother who was born with a sensorineural hearing loss and a father who acquired meningitis at the age of two. Their struggles and accomplishments inspired Jennifer to become an Audiologist and serve others who find themselves in a similar situation. Jennifer is currently completing her 4th year externship at Total Hearing Care, a private practice in Flushing, Queens as part of her Doctorate of Audiology from the Long Island Au.D. Consortium. Jennifer achieved her Bachelors of Arts from St. John's University in Speech-Language Pathology and Audiology and for the past two years has been on the Student Concerns Committee for the Long Island Speech-Language-Hearing Association. Jennifer is also the recipient of the St. John's University Kit Kade Award and the Long Island Speech-Language-Hearing Association Joan Fox Memorial Award.

Jennifer also has worked for the past three years as Dr. Donna Geffner's graduate assistant at St. John's University Speech and Hearing Center helping her collect data for her recently published test, *Auditory Skills Assessment*, which allows children who are at risk for Central Auditory Processing Disorder to be detected before the age of seven. Also for the past ten years, Jennifer had managed a local pharmacy in Brooklyn that required her to assist the pharmacist on necessary tasks and train new employees.

Jennifer is currently collecting data for her doctoral proposal, "A Subjective Examination of Monaural vs. Binaural Fitting Preferences in an Adult Deaf Population." The purpose of this study is to randomly evaluate the hearing aid(s) preferences of adults with congenitally severe to profound bilateral symmetric sensorineural hearing loss using an in-take form and a questionnaire. The questionnaire will specifically determine factors related to unsuccessful binaural amplification usage in an effort to hypothesize which factors could be responsible, such as auditory deprivation, inadequate acclimatization period, age, educational background, finances, cosmetics, function of hearing aid, and quality of hearing. Outcomes from this study may assist audiologists to better counsel their patients among the Deaf population who are fitted with binaural amplification to permit proper and consistent usage of their hearing aid(s). Jennifer hopes to share her findings at future local and national conferences. After graduation, Jennifer looks forward to working more closely with the Deaf population.

2011 Honors and Awards Nomination Form

PREPARATION OF NOMINATION FORM FOR HONORS AND AWARDS

Note: Previous award recipients are eligible for nomination in other categories. Only completed written applications will be considered for any award.

Nomination _____ for the _____ Award

Honors of the Association:

This award is designed to acknowledge an individual who has provided outstanding service to the association and to the profession. The parameters of the award include service, contribution to the advancement of knowledge, leadership and outstanding teaching. Individuals attentive to legislative activity, administration, research contributions and a lifetime of innovative clinical practice are also considered for the honor. The individual selected must be a member in good standing and presents with a distinguishing criteria related to the profession of communication sciences and disorders. Honors of the Association is the highest award given by this organization. It is suggested for yearly consideration though not mandated.

Outstanding Service Award:

The award is designed to recognize a LISHA member, who has offered outstanding and exemplary service to the association on a broad and continuing basis. Any member of the association may be considered for this honor by working beyond the expected level of responsibilities and functions associated with their elected, volunteer or general membership responsibilities. Consideration for nomination may also include consumer advocacy, legislative or other governmental affairs activity or public awareness for the professions, communication sciences or disorders and/or the association. This award may honor a member who not only contributes via commitment to LISHA but to other organizations by supporting and embodying the spirit of volunteerism. Student members in good standing may be considered for this award. This award is intended to be a yearly award.

Special Citation:

This award is given to an individual who reflects the interests and intents of professionals in the field of communication sciences and disorders. Consideration is given to members and non-members alike. Recipient is a worthy individual, program or organization who provides unique and special services on behalf of Speech-Language and Hearing professionals or on the interests of LISHA. It is not to be considered a mandated yearly award.

Mimi Katzen Award:

This award is given to a member, program or institution engaged in rehabilitation and/or research relating to disorders of human communication sciences and disorders. All professional practice locations are eligible as this award is named in honor of a practicing speech-language-pathologist. This award is intended to be a yearly award.

Nominations must be received by June 9th

Send the completed nomination form and all required materials to:

LISHA – PO Box 133, Mastic Beach, NY 11951

Nominee

Name and Address

Occupation, Profession, Employer

Phone Number

LISHA Member (yes or no) List positions held if applicable.

Nominator

Name

Address

Phone Number

E/Mail

Nominee's Education, Training, Licensure/Certification Status, Institutions Attended,
Degrees and Awards (attach Resume if available)

Nominee's Professional Affiliations (including LISHA), number of years and positions held.

Nominee's Professional Contributions and relationships within the field. including, clinical
service, research, training, articles, volunteerism, school community leaders, all others that
support the communication field.

Nominee's accomplishments in staying professionally up-to-date.

List Teaching/Clinical Experience.

Describe nominee and circumstances and/or actions that qualify this nominee for this award.

Signature of Nominator _____ date _____

[2010 Poster Contest Participants](#)

[Joanna Schaumburg, Long Island Au.D. Consortium](#)

Title of Research - To Determine the Successful use of Binaural Amplification using Spaced Retrieval Training in Individuals with Alzheimer's Disease.

[Michelle Finik and Amy Kalenderian, Adelphi University](#)

Title of Research - Fundamental Frequencies of American English Vowels Spoken by Adult Females.

[Jennifer Hartman, Long Island Au.D. Consortium](#)

Title of Research - A Subjective Examination of Monaural vs. Binaural Fitting Preferences in an Adult Deaf Population.

[Eneida Agolli, Montclair State University](#)

Title of Research - The Effect of Foreign Accent on Semantic Processing of English Sentences.

Correction from September 2010 page 4

Below are the corrected contacts for Long Island University, Brooklyn and Brookville Campus

Long Island University, Brooklyn Campus		Degree: M.S.	
Address: Long Island University Brooklyn Campus Office of Graduate Admissions 1 University Plaza Brooklyn NY, 11201-537 Dr. Nelson Moses Nmoses@liu.edu enroll@cwpost.liu.edu	Application:		
	Letter #1:		
	Letter #2:		
	Letter #3:		
	GRE Scores:		
	Essay:		
Deadline:		Resume:	
Phone:	718-488-1011	Fee:	

Long Island University, C.W Post Campus		Degree: M.A.	
Address: Long Island University C.W. Post Campus Graduate Admissions Office 720 Northern Boulevard Brookville, NY 11548-1300 Dr. Dianne Slavin dslavin@liu.edu	Application:		
	Letter #1:		
	Letter #2:		
	Letter #3:		
	GRE Scores:		
	Essay:		
Deadline:		Resume:	
Phone:	516-299-5436	Fee:	

IN MEMORIAM

Martin Lapidus passed away on August 12, 2010.

Marty was an active member of LISHA during the early stages of its development – it was originally called LISA - and he was the 1968-69 president of the association. Having dual certification in speech and hearing, he was actively involved as a therapist, mentor, teacher and administrator. Marty started out as a speech-language therapist in the Hicksville schools advancing to chairman of the department and was the director of the Bethpage Speech and Hearing Center for many years. He later became the Assistant Superintendent of Schools for Pupil Personnel Services in the Merrick UFSD. All who worked with Marty valued his dedication and expertise. He will be missed.

Contributions in his memory can be made to:

Leukemia and Lymphoma Society
555 Broadhollow Road
Suite 403
Melville, New York 11747

Upcoming Events

January 18, 2011

"The New State Mandated IEP: What is it All About??"

Location: The Campo Salisbury Center, 718 The Plain Road, Westbury NY

Presenter: Jack Kamins, Centris Group

Time: 5:30pm Registration - 9:00pm

.3 CEUs offered (ASHA) offered (ASHA)

January 29, 2011

Co-Sponsor with The Information Connection

"Childhood Apraxia of Speech: Current Guidelines in Diagnosis and Treatment"

Location: Campo Salisbury Center, 718 The Plain Road, Westbury NY

Presenter: Donna Lederman, M.A., CCC-SLP

Time: 8:30am Registration - 3:30pm

.5 CEUs offered (ASHA)

February 8, 2011

"How To Start A Private Practice"

Location: The Campo Salisbury Center, 718 The Plain Road, Westbury NY

Presenter: Francine S. Pickus, M.S., CCC-SLP TSHH

Time: 5:00pm Registration - 8:30pm

.3 CEUs offered (ASHA)

March 12, 2011

Co-Sponsor with The Information Connection

"Optimize, Minimize & Organize"

A Systematic Approach to Producing, Storing and Using Visual Supports

Location: The Marriott Residence Inn, Plainview, NY

Presenter: Barbara Bloomfield, M.A., CCC-SLP

Time: 8:45am Registration - 3:00pm

.5 CEUs offered (ASHA)

October 21, 2011

2011 ANNUAL FALL CONFERENCE

Location: Crest Hollow Country Club - 8325 Jericho Turnpike, Woodbury, NY

Time: 7:30am Registration - 3:30pm

.5 CEUs offered ASHA and AAA

Speakers:

J. Scott Yaruss, Ph.D., CCC-SLP

"Practical Treatment Strategies for School-Age Children Who Stutter"

Lori A. Frost, M.S., CCC-SLP

"Communication Assessment and Treatment for Young Children with ASD"

Cathy Lazarus, Ph.D., CCC-SLP, BRS-S

"Management of Swallowing Disorders in Treated Head and Neck Cancer Patients"

Tom Thunder, Au.D., FAAA, INCE Bd Cert

"Forensic Audiology: A New Frontier in the American Legal System"